



Tammy Taylor 12 Step System

Apply A Full Set of Sculptured Nails in under 1 hour

1. SANITIZE - Tammy Taylor Sanitize is available in 2 fragrances: *Peach and Gardenia*. Start every procedure by sanitizing your hands first, then your clients.

2. REMOVE POLISH - Tammy Taylor Acetone Polish Remover, with conditioners, is available in 2 fragrances: *Peach and Gardenia*. **Note:** Non-Acetone Polish remover can leave acrylic nails yellow and gummy.



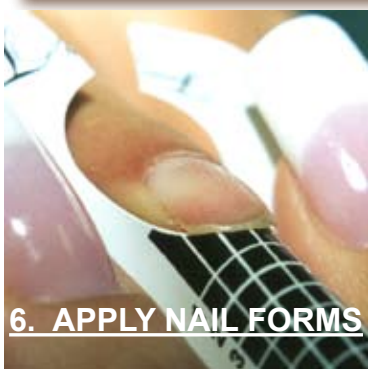
3. ETCH - The 100-grit Purple Terminator is the best file for etching. Proper etching will eliminate 75% of lifting. **3-A.** Etch only the way the nail grows, from the cuticle to free-edge, until you have no shine on the nail-plate. Etching will create little hills & valleys on the top of the nail-plate, which the product will flow into. **3-B.** To further insure no lifting, use the Pterygium Stone to push back excess cuticle and skin that has grown onto the nail-plate.



4. DUST - Remove the particles from the nail-plate with a plastic manicure brush. It is necessary to brush from cuticle to free-edge, until the nail is clean. This also helps eliminate lifting. **Note:** A cosmetic brush can spread germs, as it cannot be properly disinfected; and it can cause lifting.



5. PRIME - Apply Primer to all 10 nails and let them dry. This will dry out the oils and kill the germs on the nails. A pre-prime is not necessary; and a pre-prime can cause lifting. **Note:** The primer is a methacrylic acid. A half ounce bottle can prime 1,000 nails; so a very small amount is all that is needed. Primer can cause irritation. Dab the primer brush on a towelette, before priming, to remove excess. After priming, wipe brush before placing brush back in bottle to eliminate contamination. **WARNING:** If primer is spilled, remove any clothing anywhere primer spilled and wash affected areas with soap and water for at least 15 minutes. *(Always keep Primer in a Primer Holder)*



6. APPLY NAIL FORMS - The Tammy Taylor Forms are available in 3 different nail-bed shapes: *Oval, Square and Original*. Also 2 different designs: *Competitive Edge and Custom*. The proper form will help eliminate breaking and cracking.



7. RE-PRIME - Apply 2nd coat of primer, to one nail at a time, just before applying acrylic. **Note:** If second coat of primer dries, a 3rd coat can be applied. Applying product while primer is still wet will help eliminate lifting.



8. APPLY PRODUCT - (The Tammy Taylor powders are available in 12 colors: Clear Pink, Pink, Dramatic Pink, True Pink, Pinkest-Pink, P3, White, Dramatic White, Whitest-White, Natural, Peaches n' Cream & Clear.)



Product is applied in 4 balls. White on the free-edge and Pink on the nail-bed. "Pat the White" and "Stroke the Pink": "1, 2, 3, 4 balls".



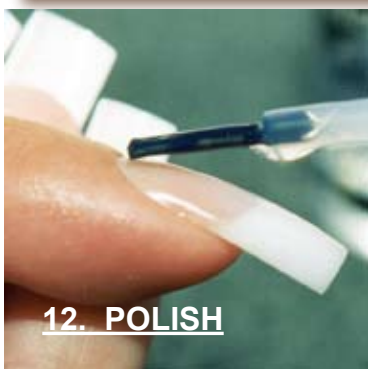
Use the Tammy Taylor deep Ceramic Dish and Custom brushes, for the perfect consistency when making a nail. (The deep Ceramic Dish comes in two colors: Black or White) (The Custom brushes are available in 2 designs: Original & Flat. Custom Original comes in 4 sizes: X-Large, Large, Original & Small. Custom Flat come in sizes: Large, Medium & Small.)

9. FILE - File the nails in 5 Steps. Using Tammy's exclusive "Horseshoe Pattern", will give you that perfect contour. Tammy has many different files to choose from. ("I like the T.T. 100-grit Purple Terminator and the T.T. 180-grit Zebra," says Tammy.)



- | | |
|------------------------|--|
| Step-1 Left Side | Step-4 Cuticle & Contour (Horseshoe Pattern) |
| Step-2 Right Side | Step-5 Clients Angle |
| Step-3 Tip (free-edge) | |

10. BUFF - Apply cuticle oil to nail (*available in fragrances: Peach and Gardenia*); and then buff with the Clean Finish buffer, to smooth nail and remove scratches. Shine the nail with the Super Soft Shiner.



11. WASH HANDS - Squirt a small amount of the Tammy Taylor fragrant shampoo (*available in Peach*) on a manicuring brush, and hand it to the client to wash their hands. A little squirt of Peach scrub is also a nice touch. This is an excellent way to build retail sales.

12. POLISH - Apply A+ Coat to keep acrylic nails Pink & White. Or, apply Z-Coat over color polish.

Tammy Taylor Nails, Inc.
18007 Sky Park Circle, Suite E, Irvine, CA. 92614
Tel (949) 250-9287 * (800) 93-TAMMY * Fax (949) 250-1853

www.TammyTaylorNails.com