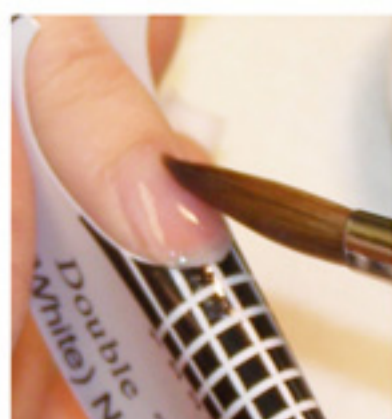


“Black & White Italian Marble” Nail Design

Full Prizma Nail (Little Black Dress Acrylic)



Apply TT Clear Acrylic to nail bed (prevents staining)



Apply Prizma to Free-edge



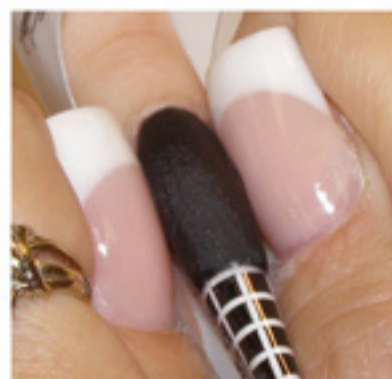
Apply Prizma to 1/2 Nail-bed



Apply Prizma to Cuticle area



Apply TT Clear Acrylic over entire nail (seals Prizma Acrylic)



Squeeze C-Curve

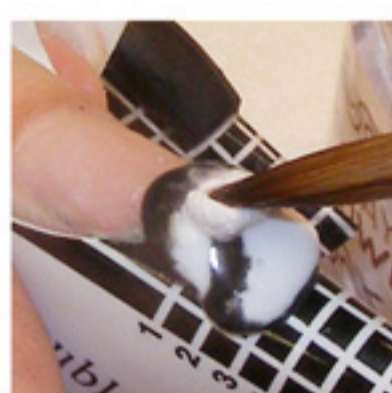
Italian Marble Design (Use TT W3 White Acrylic and Little Black Dress Prizma)



Double Dip/Pick up small ball W3, Drag through Black /Place



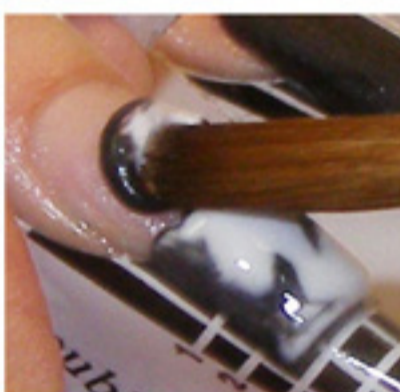
Double Dip/Pick up small ball W3, Drag through Black /Place



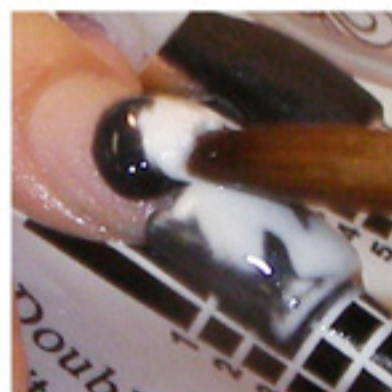
Place small ball of W3 in center



THEN PAT from sides only/bringing in the Black/Keeping W3 in center



Double Dip/Pick up small ball W3, Drag through Black/Place



Place small ball of W3 in center



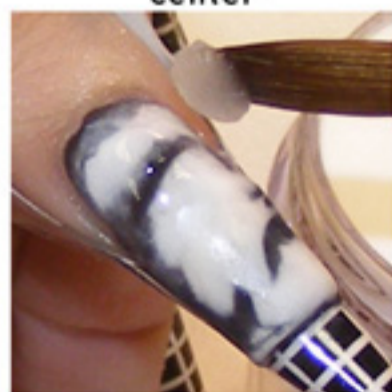
THEN PAT from sides only/bringing in the Black/Keeping W3 in center



Double Dip/Pick up small ball W3, Drag through Black/Place



Place small ball of W3 in center (PAT)



Apply TT Clear Acrylic over entire nail (seals Prizma Acrylic) and Squeeze C-Curve



FILE using 5 step system w/ Tammy Taylor 180 grit Zebra



Buff with Clean Finish Buffer and wash hands



Apply Top Gel+ CURE/CLEAN

